

# Smart Routines Solution Expansion

## Integrate Surveying to Strengthen Employee Insights and Experience

Powered by ResponseTek

Obtain Employee Insights | Improve Communication | Drive Organizational Improvement

### Leverage Surveying to Assess Employee Sentiment

Understanding employee experience is continuing to increase in importance to the C-Suite. A structured program will provide a complete picture of employee experience.

#### Employee Relationship Insights

- Distribute secure, recurring surveys to all employees to track overall satisfaction benchmarks
- Control direct access to results by Department/Manager
- Analyze results to identify satisfaction drivers and opportunities for improvement

#### Employee Listening Posts

- Provide an “Always On” set of digital suggestion boxes to ensure your employees can provide feedback anytime
- Embed on your company Intranet
- Utilize in-office posters/signs with QR codes

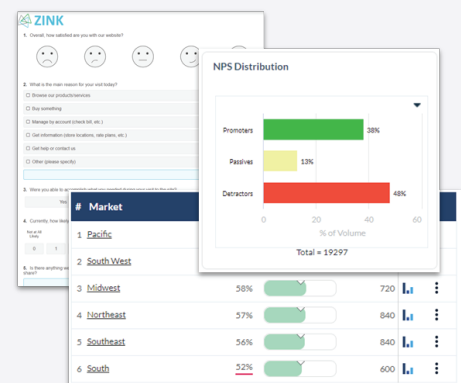
#### Employee Journey Tracking

- Utilize structured surveys as part of your hiring process to enable efficient qualification processes (e.g., behavior surveys)
- Assess onboarding (e.g., after 4 weeks)
- Measure key investments such as training sessions

### What's Included

#### The Voice of Employee capability, powered by ResponseTek, includes:

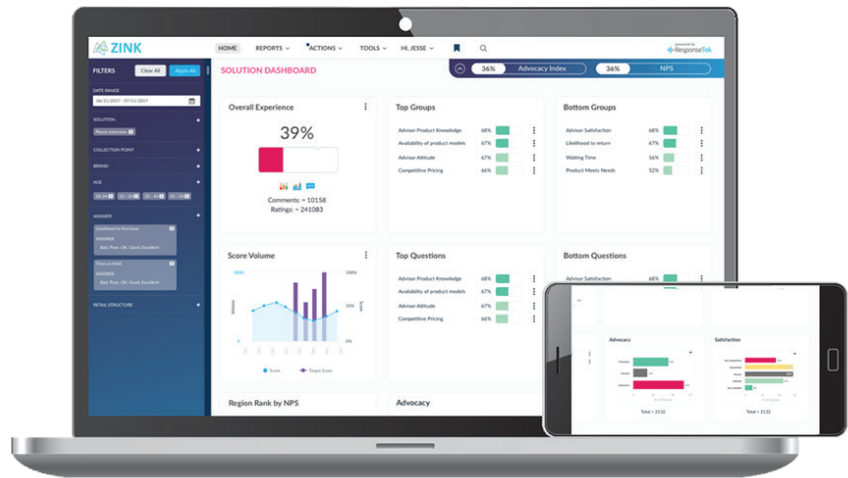
- Branded, customized surveys can be tailored to fit specific needs
- Real-time dashboards and scorecards that summarize survey results
- Analytics to drill into segments and details
- Notifications when survey responses are received so you can take timely action
- Integrated workflow and action management to drive follow-up and improvement



## Strengthen Employee Insights and Experience

Complement your HR self service platform by systematically capturing feedback and insights from your employees, which will enable to you:

- **Identify** where the gaps are in employee expectations vs reality
- **Measure** key steps in the employee journey, from recruitment through to off-boarding
- **Understand** how experience varies by employee segment/demographic/region/etc.
- **Establish** a systematic process to address issues and improve retention



The ResponseTek Platform is an enterprise Voice of Employee survey platform designed to obtain employee insights, improve communication, and drive organizational improvement.


“With Ignite Prime, customers advance digital transformation across their organization with unprecedented customer-friendly economic terms. Ignite Prime helps customers ignite better business performance by stretching their budgets to achieve more. Or as we like to say, deliver new capabilities that are Powered by Prime.”

— **Davin Cushman**  
CEO, Ignite Technologies, Inc.

### Request Smart Routines Employee Surveying Capability Today.

This employee surveying capability for Smart Routines, Ignite’s ResponseTek platform, is available today, complimentary for all customers with an active Ignite Smart Routines contract. It is offered through Ignite’s exclusive customer benefit program, [Ignite Prime](#). For details, including eligibility confirmation, contact your Ignite Customer Success Manager.

### For More Information

 [ignitetech.com/smart-routines](https://ignitetech.com/smart-routines)  
 [ignite-technologies](https://ignite-technologies)